

ALTO SAX 1

Blood Count

Billy Strayhorn

SlOW BALLAD ♩ = 58

A

mp

3 3 3

5 5 5 3

Section A, first two staves. The first staff begins with a dynamic marking of *mp* and contains several triplet markings (3) over eighth notes. The second staff continues the melodic line with more triplet markings (5) and a final triplet (3).

B

3 3

6 6 6

Section B, first two staves. The first staff features a triplet (3) and another triplet (3) later in the line. The second staff contains three sextuplet markings (6) over eighth notes.

C

mf

3 5 3 3

Section C, first two staves. The first staff starts with a dynamic marking of *mf* and includes triplet (3) and sextuplet (5) markings. The second staff continues with more sextuplet (6) and triplet (3) markings.

D

3 6 6 6 3

Section D, first two staves. The first staff features a triplet (3) and a double bar line. The second staff contains four sextuplet markings (6) and a final triplet (3).

ALTO 1

-2-

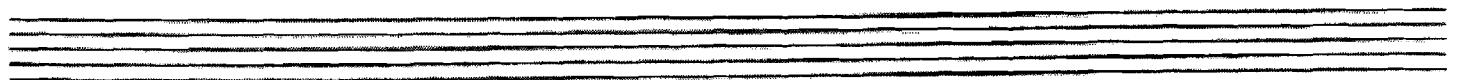
BLOOD COUNT

E SWING

Chord symbols: E, Em, D, C, C#7, F#7(b9), G7(b9), Ab7(b9), A7(b9)

F BALLAD

Boxed label: G



ALTO SAX 2

Blood Count

Billy Strayhorn

SLOW BALLAD $\text{♩} = 58$

A

4

p

mp

mf

3

3

3

E SWING

F BALLAD

G

T.SX. 1

-2-

BLOOD COUNT

F

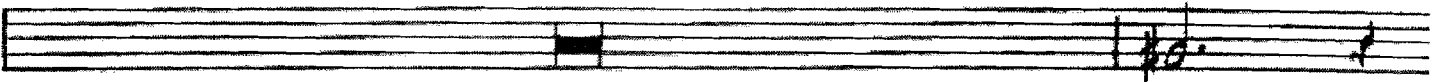
BALLAD

8

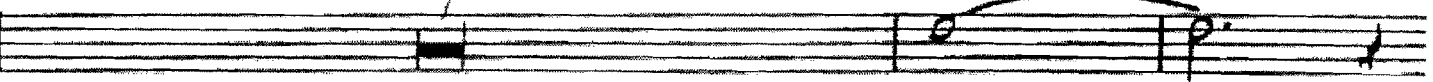


G

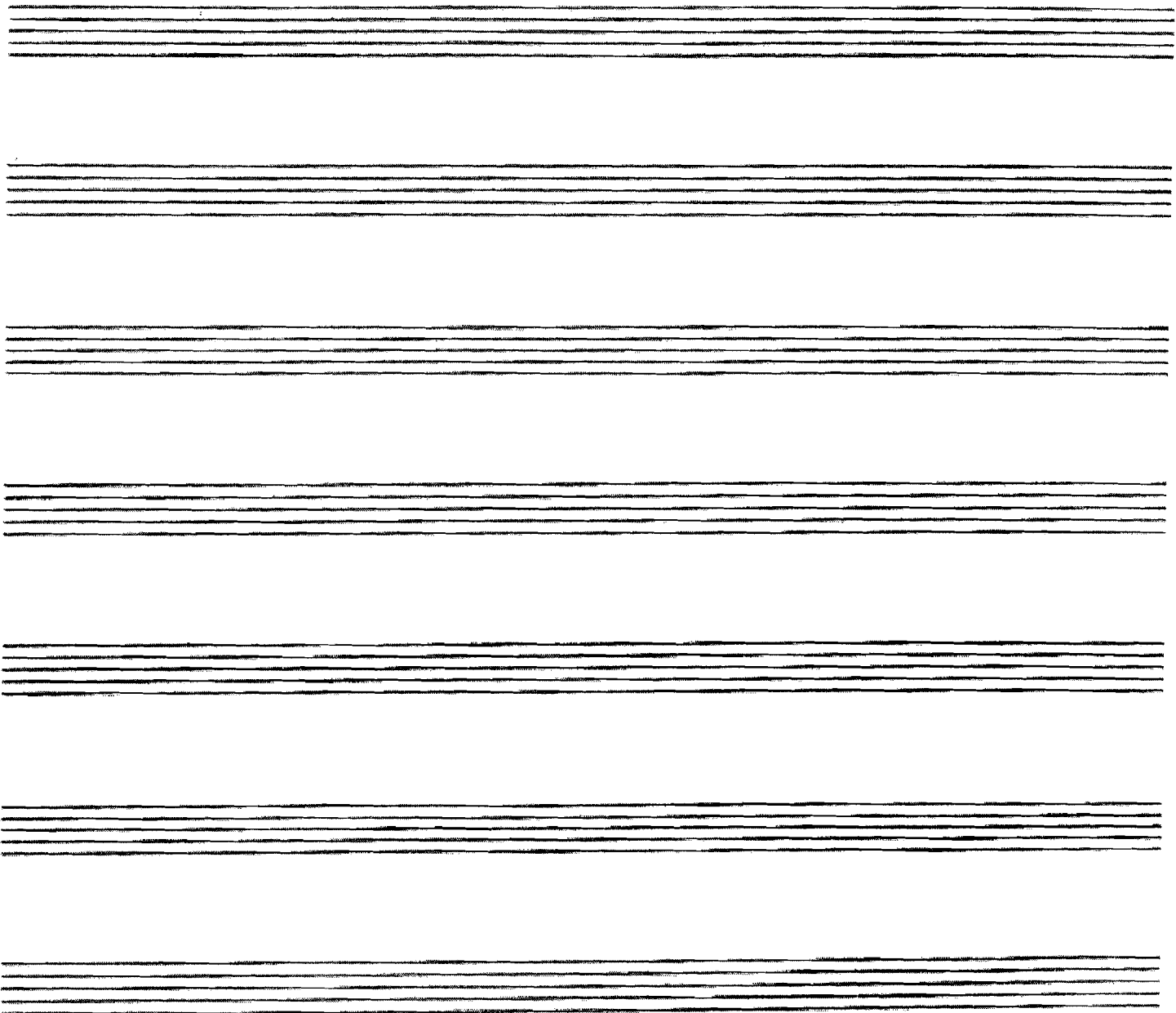
3



7



mp



TENOR SAX 2

Blood Count

Billy Strayhorn

SLOW BALLAD $\text{♩} = 58$

A

Handwritten: A^\sharp C

Handwritten: 4

B

8

C

mp

D

7

mf

E

SWING

f

mf

T.SX. 2

-2-

BLOOD COUNT

F

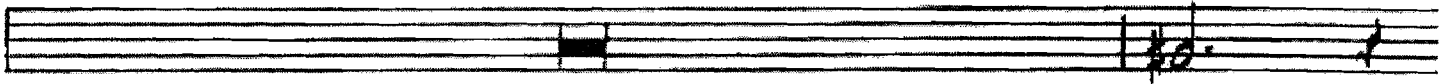
BALLAD

8



G

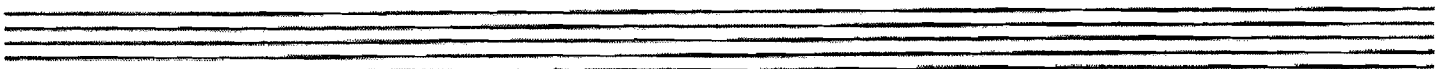
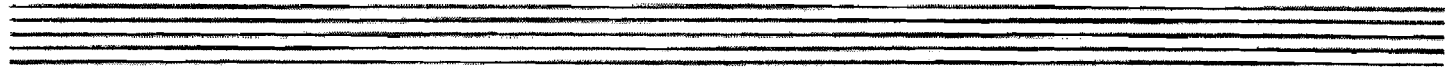
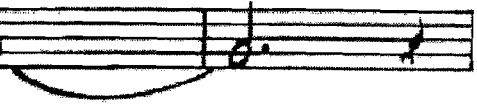
3



7



mp



BARI. SAX

Blood Count

Billy Strayhorn

SLOW BALLAD $\text{♩} = 58$

A

p

B

C

D

BARI.

BLOOD COUNT

E SWING

f

mp

F BALLAD

p

ka

ka

ka

mp

G

p

ka

mp

TRUMPET I

Blood Count

Billy Strayhorn

Slow BALLAD $\text{♩} = 58$

A 8

B 8

C 8

D

E SWING

F BALLAD
TO HARMON

8 6

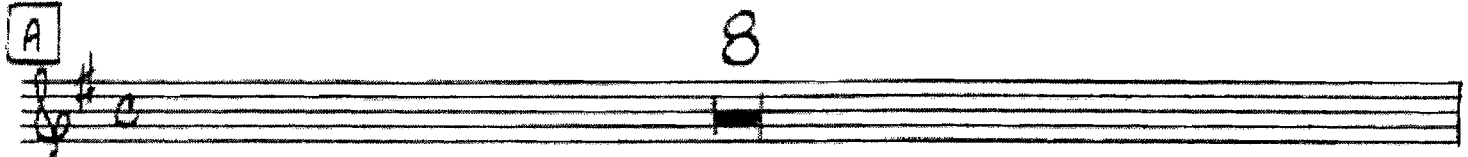
TRUMPET 2

Blood Count

Billy Strayhorn

SLOW BALLAD $\downarrow = 58$

A 8



B 8



C 8



D

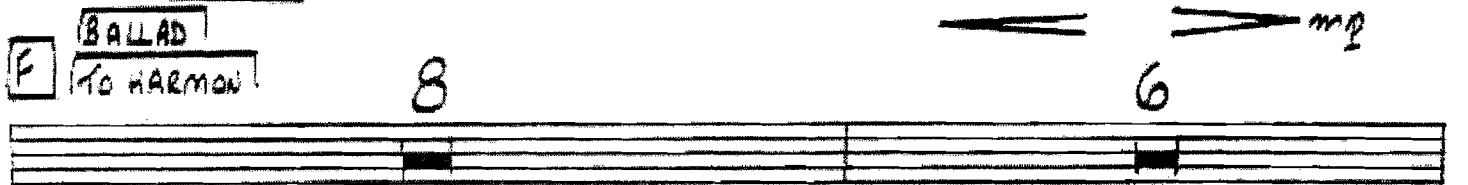


E SWING



F BALLAD TO HARMON

8 6 *mf*



mf



TRUMPET 3

Blood Count

Billy Strayhorn

Slow BALLAD ♩ = 58

A 8

B 8

C 8

D 7

E SWING

F BALLAD TO HARMON 8 6

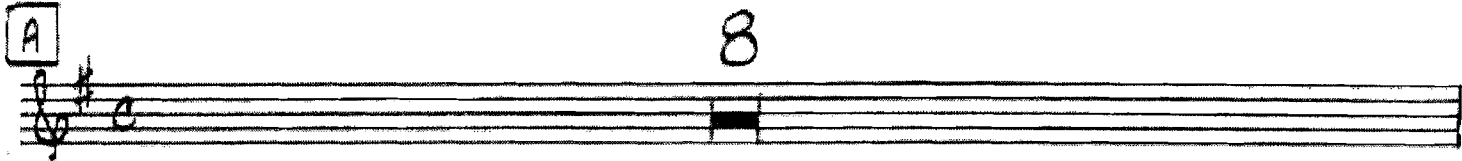
TRUMPET 4

Blood Count

Billy Strayhorn

SLOW BALLAD ♩ = 58

A 8



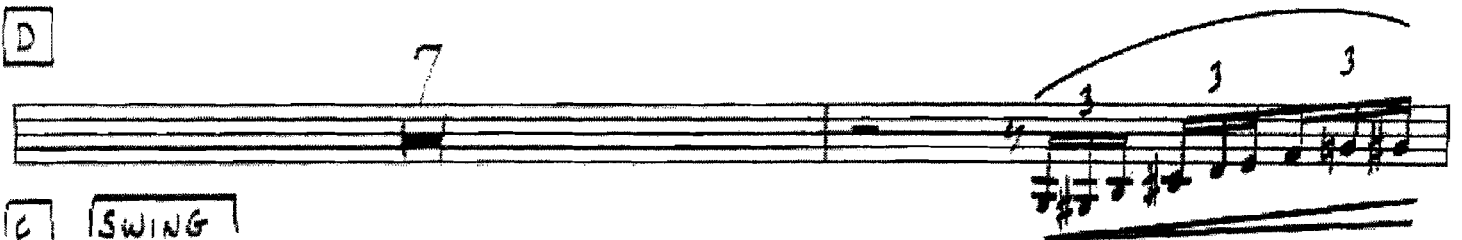
B 8



C 8



D

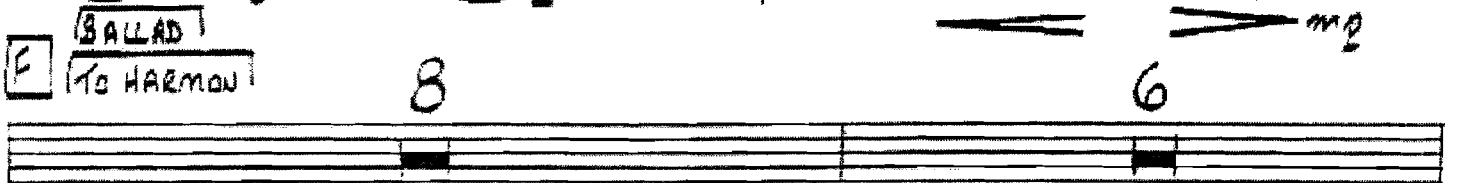


E SWING



F BALLAD TO HARMON

8 6 mp



(TACE)

mf



TROMBONE 1

Blood Count

Billy Strayhorn

SLOW BALLAD $\text{♩} = 55$

A

First line of musical staff A. It begins with a treble clef, a key signature of one flat (B-flat), and a common time signature (C). The first measure contains a whole note chord marked with a '1' below it. The second measure has a half note chord with a flat symbol (B-flat) above it. The third measure has a half note chord with a flat symbol (B-flat) above it. The fourth measure has a half note chord with a flat symbol (B-flat) above it. A slur spans the second and third measures, and another slur spans the third and fourth measures.

Second line of musical staff A. It contains a sequence of eighth notes: G4, A4, Bb4, A4, G4, F4, E4, D4, C4. There are slurs over the first two eighth notes and the last two eighth notes.

B

First line of musical staff B. It contains a sequence of eighth notes: G4, A4, Bb4, A4, G4, F4, E4, D4, C4. There are slurs over the first two eighth notes and the last two eighth notes.

Second line of musical staff B. It contains a sequence of notes: a whole note chord, a whole note chord, a half note chord with a flat symbol (B-flat) above it, and a half note chord with a flat symbol (B-flat) above it. A slur spans the last two measures.

C

First line of musical staff C. It is mostly blank, with a handwritten '4' above the staff.

Second line of musical staff C. It contains a sequence of notes: a half note chord with a flat symbol (B-flat) above it, a half note chord with a flat symbol (B-flat) above it, a half note chord with a flat symbol (B-flat) above it, a half note chord with a flat symbol (B-flat) above it, and a half note chord with a flat symbol (B-flat) above it. A slur spans the first two measures, and another slur spans the last two measures.

D

First line of musical staff D. It contains a sequence of eighth notes: G4, A4, Bb4, A4, G4, F4, E4, D4, C4. There are slurs over the first two eighth notes and the last two eighth notes.

Second line of musical staff D. It contains a sequence of notes: a whole note chord, a whole note chord, a half note chord with a flat symbol (B-flat) above it, and a triplet of eighth notes (G4, A4, Bb4) marked with a '3' above it. A slur spans the last two measures. The triplet is marked with 'mf' below it.

TBN. 1

BLOOD COUNT

E SWING

Handwritten musical notation for section E, SWING. It consists of two staves. The first staff contains a melodic line with notes, rests, and accidentals, including a triplet of eighth notes. The second staff continues the melodic line with notes and accidentals.

F BALLAD

Handwritten musical notation for section F, BALLAD. It consists of two staves. The first staff contains a melodic line with notes and rests. The second staff contains a bass line with notes and rests.

G

Handwritten musical notation for section G. It consists of three staves. The first staff contains a bass line with notes and rests. The second staff contains a melodic line with notes and rests. The third staff contains a melodic line with notes and rests.

Four empty musical staves at the bottom of the page.

E SWING

Musical notation for section E, SWING. It consists of two staves. The first staff contains a melodic line with notes, rests, and a triplet of eighth notes. The second staff contains a bass line with notes and rests. Dynamics include mp and p.

F BALLAD

Musical notation for section F, BALLAD. It consists of two staves. The first staff contains a melodic line with notes and rests. The second staff contains a bass line with notes and rests. Dynamics include p and mp.

G

Musical notation for section G. It consists of three staves. The first staff contains a melodic line with notes and rests. The second and third staves contain a bass line with notes and rests. Dynamics include p and mp.

Four empty musical staves at the bottom of the page.

TROMBONE 3

Blood Count

Billy Strayhorn

SLOW BALLAD ♩ = 55

A

Section A, first two staves. The first staff contains a melodic line with a slur over the first two measures and another slur over the last two measures. The second staff contains a rhythmic accompaniment with eighth notes.

B

Section B, first two staves. The first staff contains a melodic line with a slur over the last two measures. The second staff contains a rhythmic accompaniment with eighth notes.

C

Section C, first two staves. The first staff contains a melodic line with a slur over the first two measures and another slur over the last two measures. The second staff contains a rhythmic accompaniment with eighth notes.

D

Section D, first two staves. The first staff contains a melodic line with a slur over the last two measures. The second staff contains a rhythmic accompaniment with eighth notes, ending with a triplet of eighth notes marked *mf*.

E SWING

F BALLAD

G

BASS

Blood Count

Billy Strayhorn

SLOW BALLAD ♩ = 58

A

Section A musical notation, consisting of two staves. The first staff is in bass clef with a common time signature. It contains a sequence of eighth and quarter notes, with a triplet of eighth notes at the end. The second staff continues the melody with similar rhythmic values and another triplet at the end.

B

Section B musical notation, consisting of two staves. The first staff is in treble clef. It contains a sequence of eighth and quarter notes. The second staff continues the melody, featuring a triplet of eighth notes.

C

Section C musical notation, consisting of two staves. The first staff is in treble clef and contains a triplet of eighth notes at the beginning. The second staff continues the melody with a triplet of eighth notes at the end.

D

Section D musical notation, consisting of two staves. The first staff is in treble clef and contains a triplet of eighth notes at the beginning. The second staff continues the melody with a triplet of eighth notes at the end.

E SWING

F BALLAD

G



DRUMS

Blood Count

Billy Strayhorn

SLOW BALLAD $\text{♩} = 58$

A MALLETS - SNARES OFF

CA. CYM.

Section A, first two staves. The first staff begins with a treble clef, a common time signature, and a key signature of one sharp (F#). The music consists of eighth and sixteenth notes. A bracket labeled 'R' spans the first two measures, and a bracket labeled 'CA.' spans the next two measures. The second staff continues the melody with a triplet of eighth notes in the final measure, marked with a '3' above it.

Section B, two staves. The first staff continues the melody with a triplet of eighth notes in the final measure, marked with a '3' above it. The second staff continues the melody with a triplet of eighth notes in the final measure, marked with a '3' above it.

Section C, two staves. The first staff features a complex rhythmic pattern with many sixteenth notes. The second staff continues this pattern with various rests and note values.

Section D, two staves. The first staff continues the complex rhythmic pattern with triplet markings above some notes. The second staff continues the pattern and ends with a double bar line. Above the final measure of the second staff, the word 'STICKS' is written with a bracket, and the number '100' is written below it.

DRS.

BLOOD COUNT

E SWING
CR. RIDE

TO MALLETS

F BALLAD

G